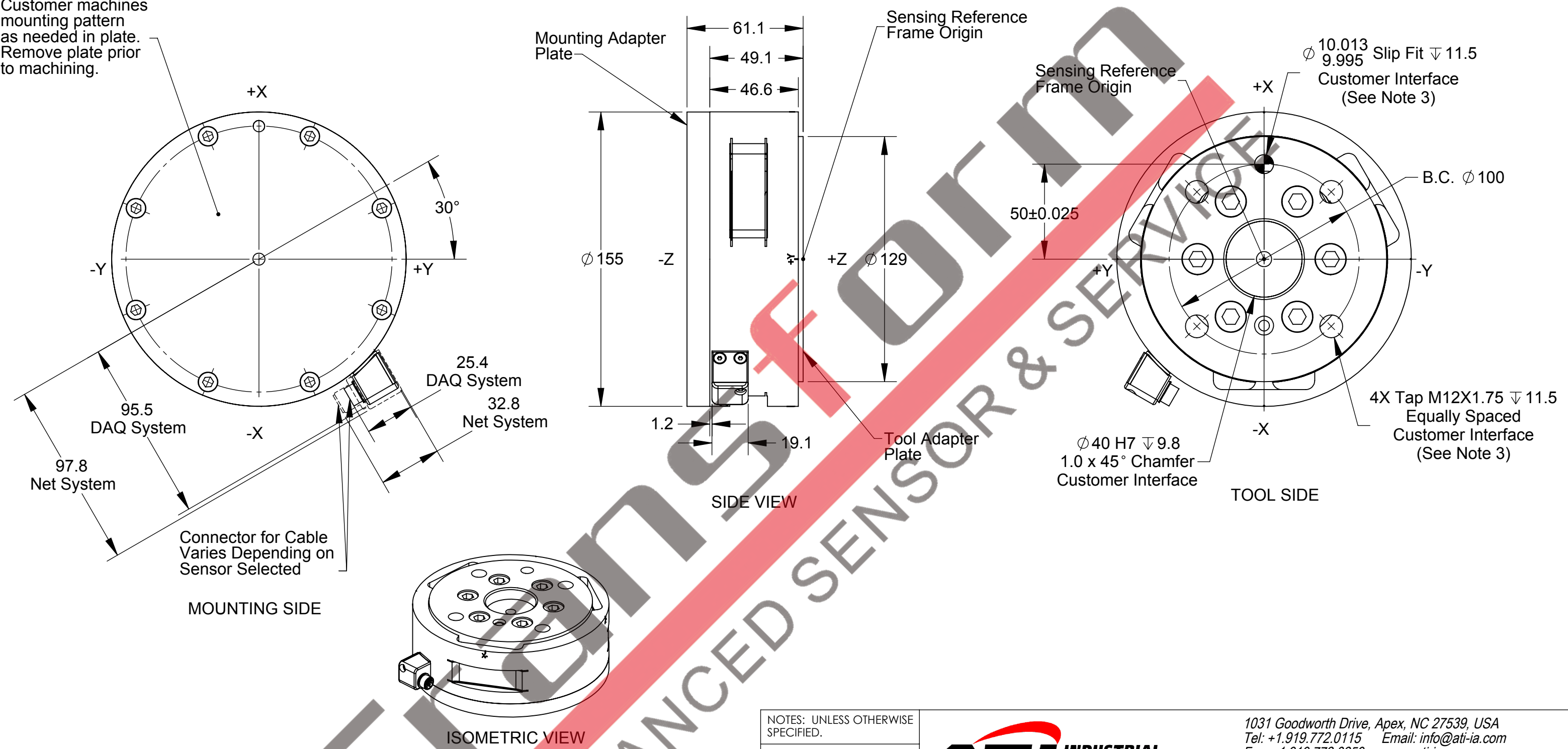


Rev.	Description	Initiator	Date
04	Eco 9230; Corrected typo; "depending"	LJH	12/7/11

Customer machines mounting pattern as needed in plate. Remove plate prior to machining.



- Notes:
1. Material: Hardened Stainless Steel.
 2. Do Not Touch internal electronics or instrumentation. This could damage the transducer and will void the warranty.
 3. **DO NOT EXCEED INTERFACE DEPTH, MAY CAUSE DAMAGE.**
 4. For best accuracy, transducer must be mounted to a surface rigid enough to support loads without deflection.

NOTES: UNLESS OTHERWISE SPECIFIED.
DO NOT SCALE DRAWING. ALL DIMENSIONS ARE IN MILLIMETERS.



1031 Goodworth Drive, Apex, NC 27539, USA
Tel: +1.919.772.0115 Email: info@ati-ia.com
Fax: +1.919.772.8259 www.ati-ia.com
ISO 9001 Registered Company

PROPERTY OF ATI INDUSTRIAL AUTOMATION, INC. NOT TO BE REPRODUCED IN ANY MANNER EXCEPT ON ORDER OR WITH PRIOR WRITTEN AUTHORIZATION OF ATI.

DRAWN BY: R Chambers 11/12/08		TITLE	
CHECKED BY: P. Fusco 12/5/08		Theta Transducer	
PROJECT # -	SHEET 1 OF 1	SCALE	REVISION
		1:2	04
		SIZE	DRAWING NUMBER
		B	9230-05-1331

