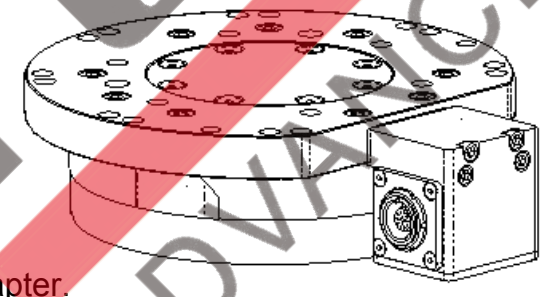
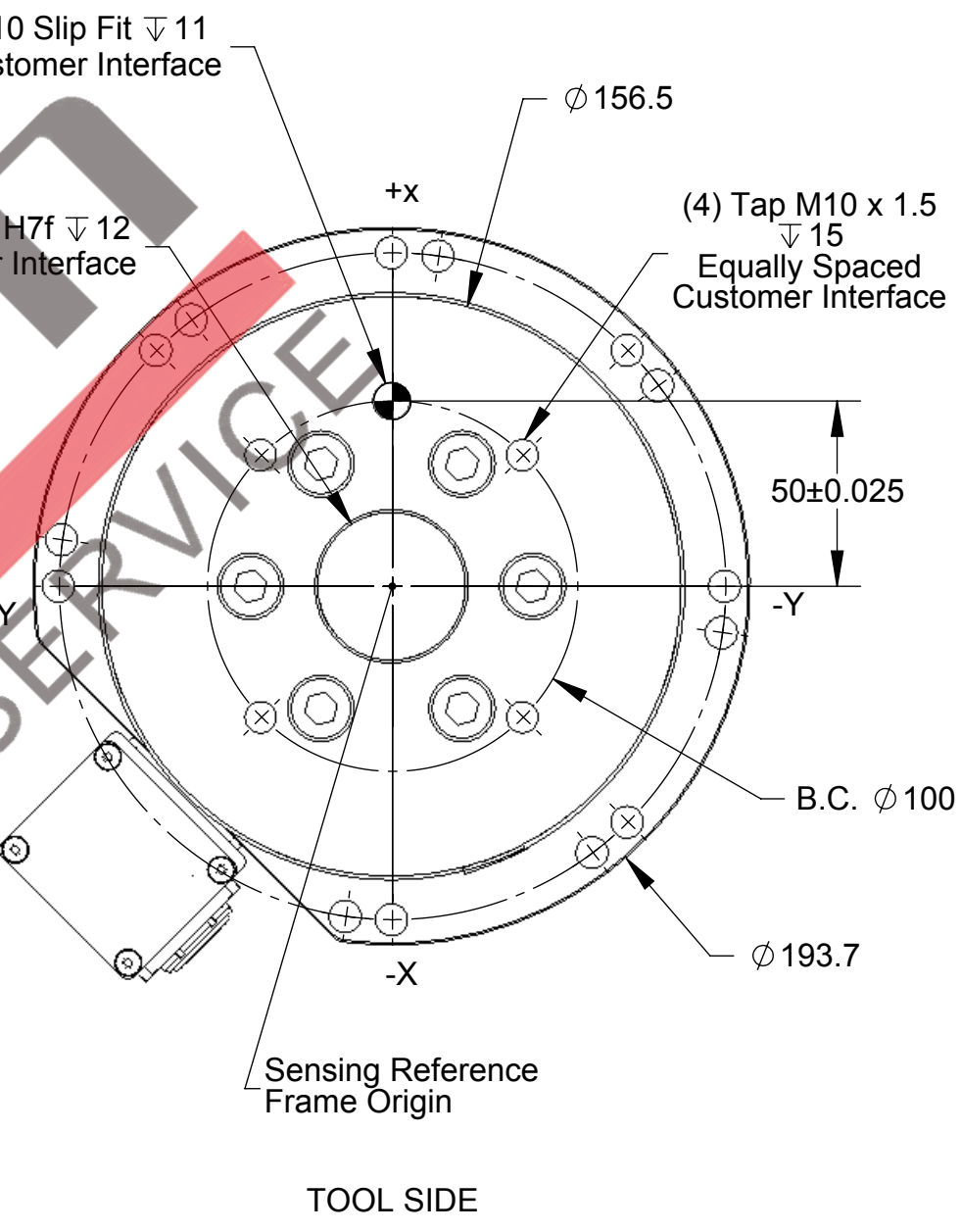
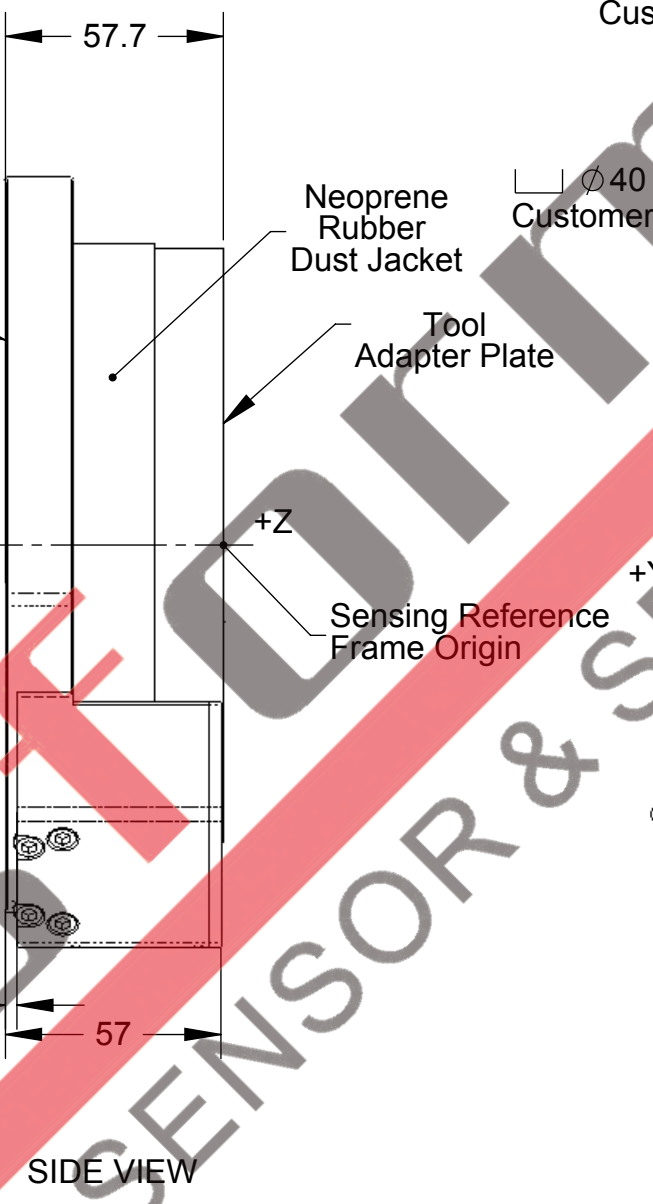
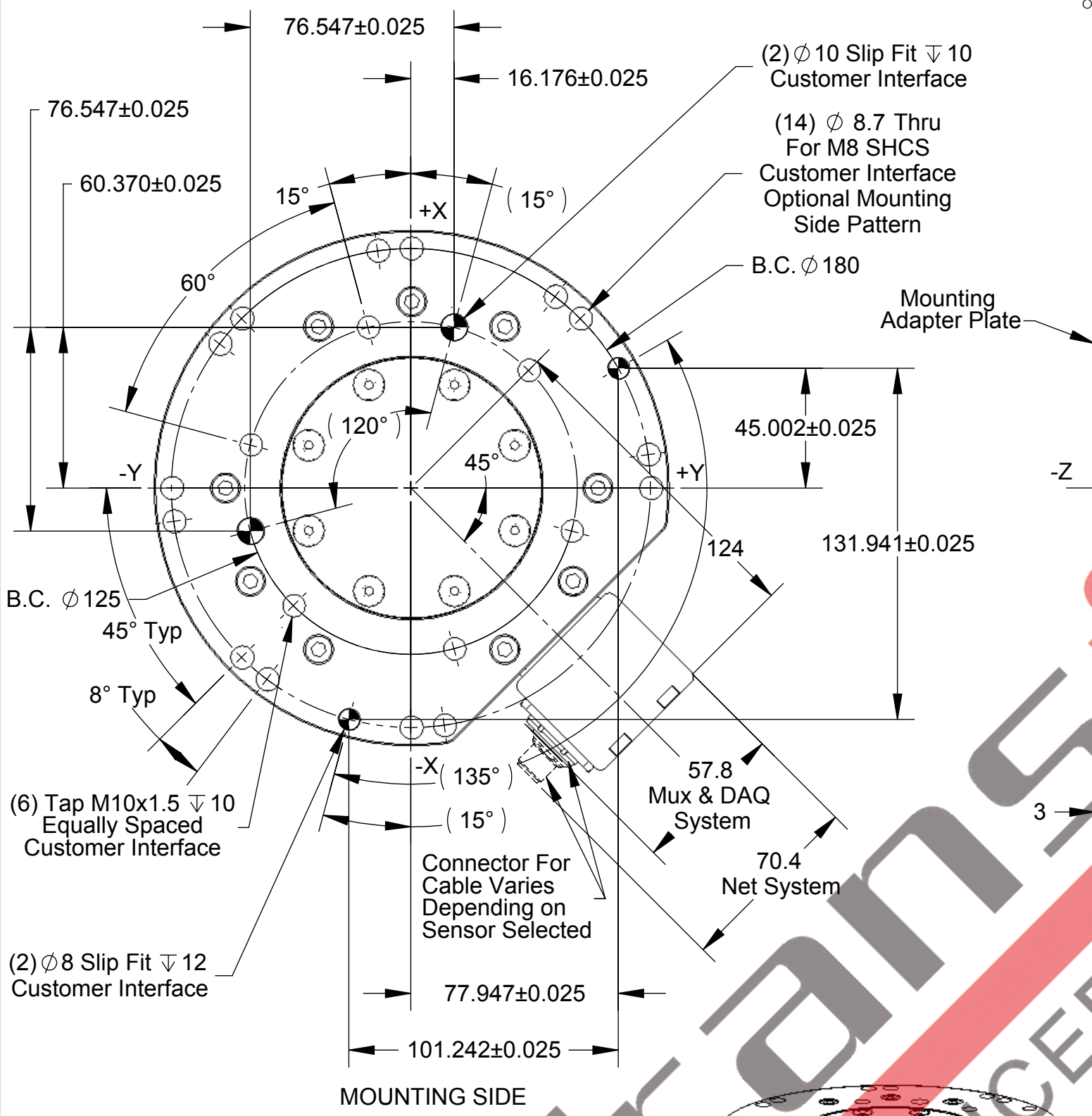


PROPERTY OF ATI INDUSTRIAL AUTOMATION, INC.  
 NOT TO BE REPRODUCED IN ANY MANNER EXCEPT ON  
 ORDER OR WITH PRIOR WRITTEN AUTHORIZATION OF ATI.

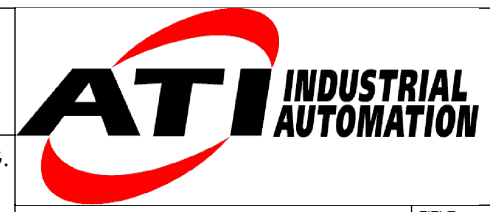
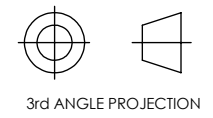
Rev.	Description	Initiator	Date
04	Added Net Dimensions	ALH	8/7/2008
05	Eco 7255; Dim from center to limit of connector block changed to 124mm from 132mm as a result of connector block component changes.	LJH	9/4/2009



- Notes:**
1. Material: Stainless Steel and Aluminum
  2. Sensing Reference Frame Origin at Surface Center of Tool Adapter.
  3. Do not touch internal electronics or instrumentation. This could damage the transducer and will void warranty.
  4. For best accuracy, transducer must be mounted to surfaces rigid enough to support loads without deflection.

NOTES: UNLESS OTHERWISE SPECIFIED

DO NOT SCALE DRAWING. DRAWN IN SOLIDWORKS. ALL DIMENSIONS ARE IN MILLIMETERS.



1031 Goodworth Drive, Apex, NC 27539, USA  
 Tel: +1.919.772.0115 Email: info@ati-ia.com  
 Fax: +1.919.772.8259 www.ati-ia.com  
 ISO 9001 Registered Company

DRAWN BY: P.Sparrow, 2/16/06	TITLE: IP60 Omega160 Transducer		
CHECKED BY: D.Norton, 2/17/06	SCALE: 1:2	SIZE: B	DRAWING NUMBER: 9230-05-1264-05
WEIGHT LBS: 17	PRODUCT RELEASE #	DATE:	SHEET 1 OF 1
ASSEMBLY REF:			